

ONE

by CA Immo

WORK. LIVE. **IMAGINE.**

**ONE
GOOD
IDEA**

WE WORK. WE LIVE.
WE MIX THE TWO.
THAT'S LIFE TO US.
WE GO OUT WE MEET OTHERS.
WE WORK TOGETHER.
WE ENJOY A DRINK AND
A GOOD TALK.





WE LISTEN TO EACH OTHER
AND WE LISTEN TO OUR HEARTS.
THAT'S WHERE WE FIND
INSPIRATION.



WE SHARE KNOWLEDGE
AND WE SHARE BIKES.
WE DON'T NEED BIG DESKS
AND WE VALUE SPACE TO GROW.
WE CONNECT BY MOBILE AND
WHILE WORKING
ON A NEW IDEA.





WE WEAR SNEAKERS AND
WE RUN COMPANIES.

WE CONCENTRATE ON OUR GOALS
WHILE WE GET LOST IN SOUL FOOD.

WE LOVE TO WORK AND
WE LOVE TO LAUGH.



NOW WE HEARD SOMEONE
HAD A GOOD IDEA.

HE'S BUILDING A HOUSE.

JUST ONE.

THE ONE FOR US.



**CAN YOU
IMAGINE ...**

...
THAT THIS
IS A LOBBY?



ONE coffee



	S	M	L
coffee			
espresso	1,90	2,20	2,60
café au lait	1,90	2,20	2,60
americano	2,80	3,40	3,90
cappuccino	2,20	2,60	3,20
latte macchiato	2,80	3,40	3,90
hot chocolate	2,80	3,40	3,90
latte	1,90	2,20	2,60

ONE fitness

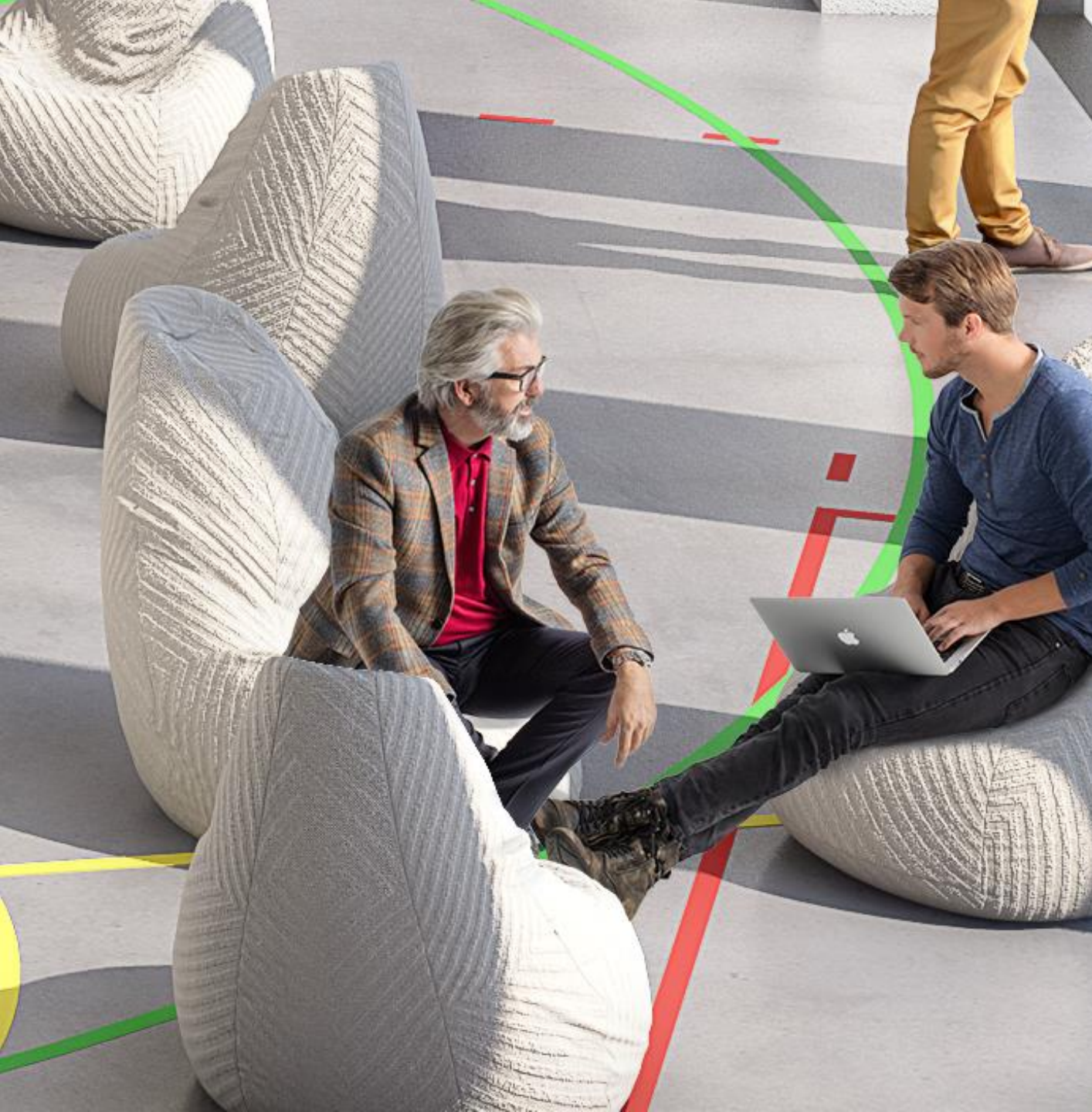
**WHY
NOT
MEET ...**



...
WHERE IT
FEELS
LIKE HOME?



**WHY
NOT
KEEP ...**



...
THE BEST
PLACES
FOR US?



**DON'T
YOU
THINK ...**



...
THAT THE BEST IDEAS
COME FROM THE MOST
UNEXPECTED MOMENTS?



**A NEW
ERA ...**

...
STARTS WITH A
NEW HORIZON.





ONE

PLACE

FOR YOU



ONE

FOR YOU

**LET'S TALK
STRAIGHT ...**

...

ABOUT

ONE



HEIGHT

175 m

TOTAL

70,000 m²

**ESTIMATED
COMPLETION**

2019/2020

...

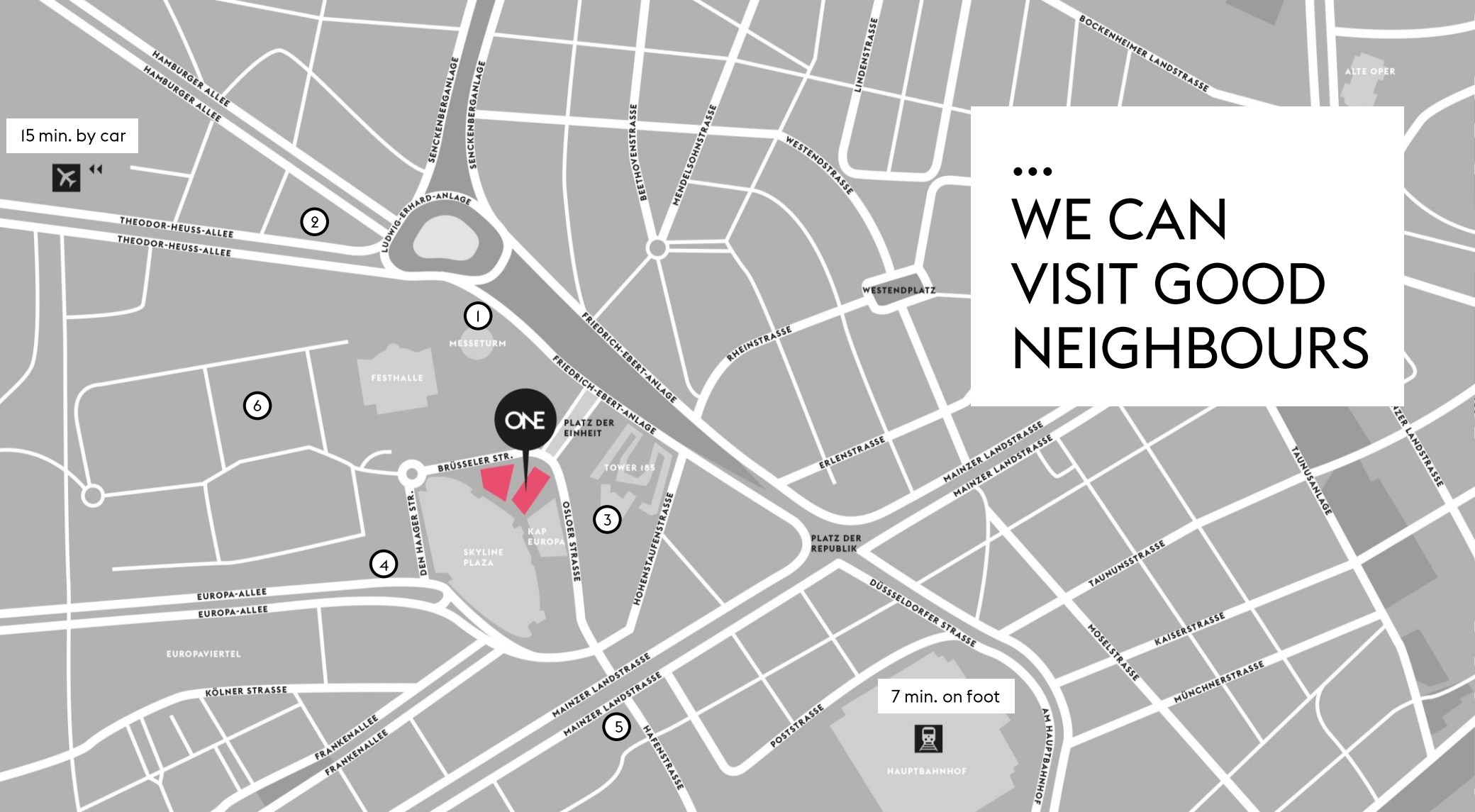
**ABOUT THE
QUARTER.**

An aerial photograph of the Frankfurt skyline, showing a dense urban landscape with various skyscrapers and buildings. A prominent, modern skyscraper with a blue-tinted facade is highlighted in the center of the image. The surrounding area includes a mix of high-rise and lower-rise buildings, with a large, curved building complex in the foreground. The sky is overcast, and the overall scene is presented in a muted, greyish color palette.

IN THE CENTRE
OF FRANKFURT
AM MAIN ...

An aerial photograph of Frankfurt, Germany, showing a dense urban landscape with numerous skyscrapers and modern buildings. The skyline is dominated by several tall, glass-clad towers, including the Commerzbank Tower on the left. The foreground features a large, modern building complex with a colorful, multi-level roof structure. The background shows a vast expanse of residential and commercial buildings stretching towards the horizon under a cloudy sky.

IN THE CENTRE
OF FRANKFURT
AM MAIN ...



...
**WE CAN
VISIT GOOD
NEIGHBOURS**

① MesseTurm: Goldman | Reuters

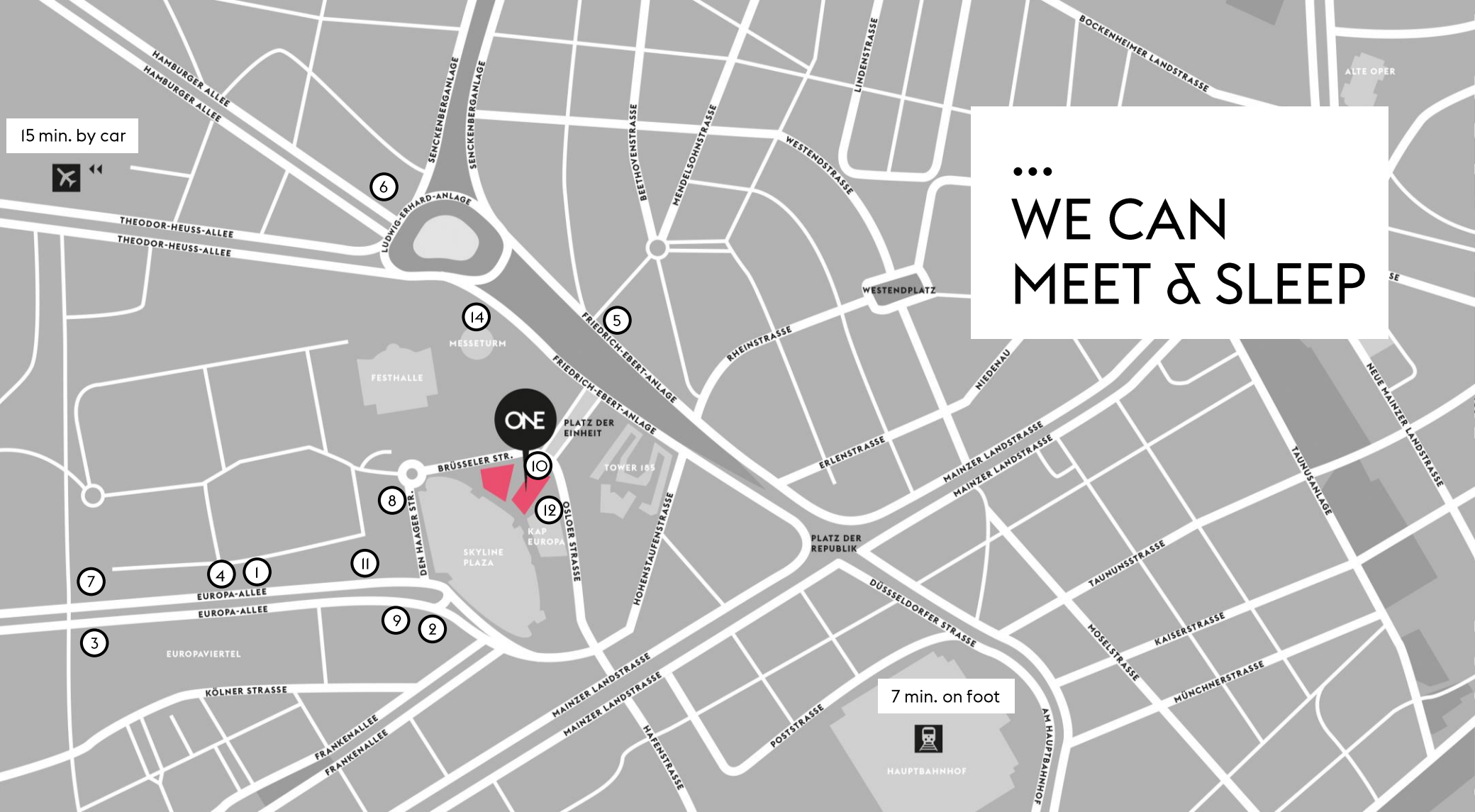
② ING-DiBa

③ Tower 185: Dechert LLP | Hyundai Capital | Mayer Brown LLP | PwC AG

④ Europa-Allee 22: BNP Paribas

⑤ Commerzbank

⑥ Messe Frankfurt



...
**WE CAN
 MEET & SLEEP**

7 min. on foot



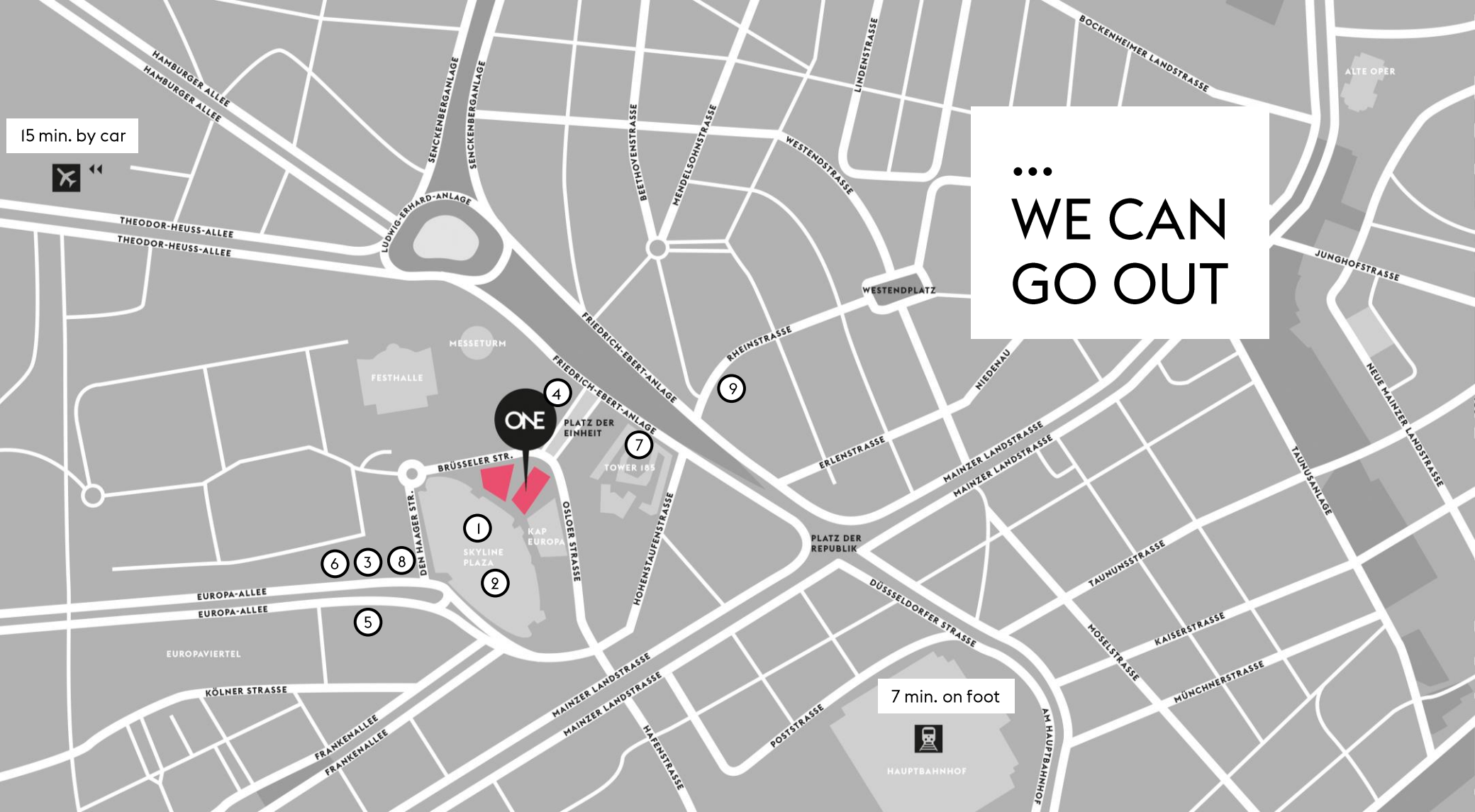
HAUPTBAHNHOF

Sleep

- ① Capri by Frazer ***
- ② Citadines ****
- ③ Dormero *****
- ④ Hampton by Hilton **
- ⑤ Hessischer Hof *****
- ⑥ Marriot (with conference area) *****
- ⑦ Meiniger ***
- ⑧ Mövenpick Hotel ****

Meet

- ⑨ Motel One ***
- ⑩ ONE Hotel ****
- ⑪ Premiere Inn **
- ⑫ Kap Europa (2,100 visitors)
- ⑬ Marriott (up to 1,000 visitors)
- ⑭ MesseTurm (up to 150 visitors)
- ⑧ Mövenpick Hotel (up to 350 visitors)
- ⑩ ONE (conference area)



...
**WE CAN
 GO OUT**

15 min. by car



7 min. on foot



HAUPTBAHNHOF

Shopping

① Skyline Plaza Shopping centre with 150 shops

Restaurants / Coffee Shops

② Skyline Plaza offers a diverse range:
 - Alex with Roof Garden
 - Coa
 - Cucina Mediterraneo
 - La Tagliatella
 - Starbucks
 - and many more

③ Block House
 ④ Chipotle Mexican Grill
 ⑤ Kaffeewerk Expressionist
 ⑥ Mosch Mosch

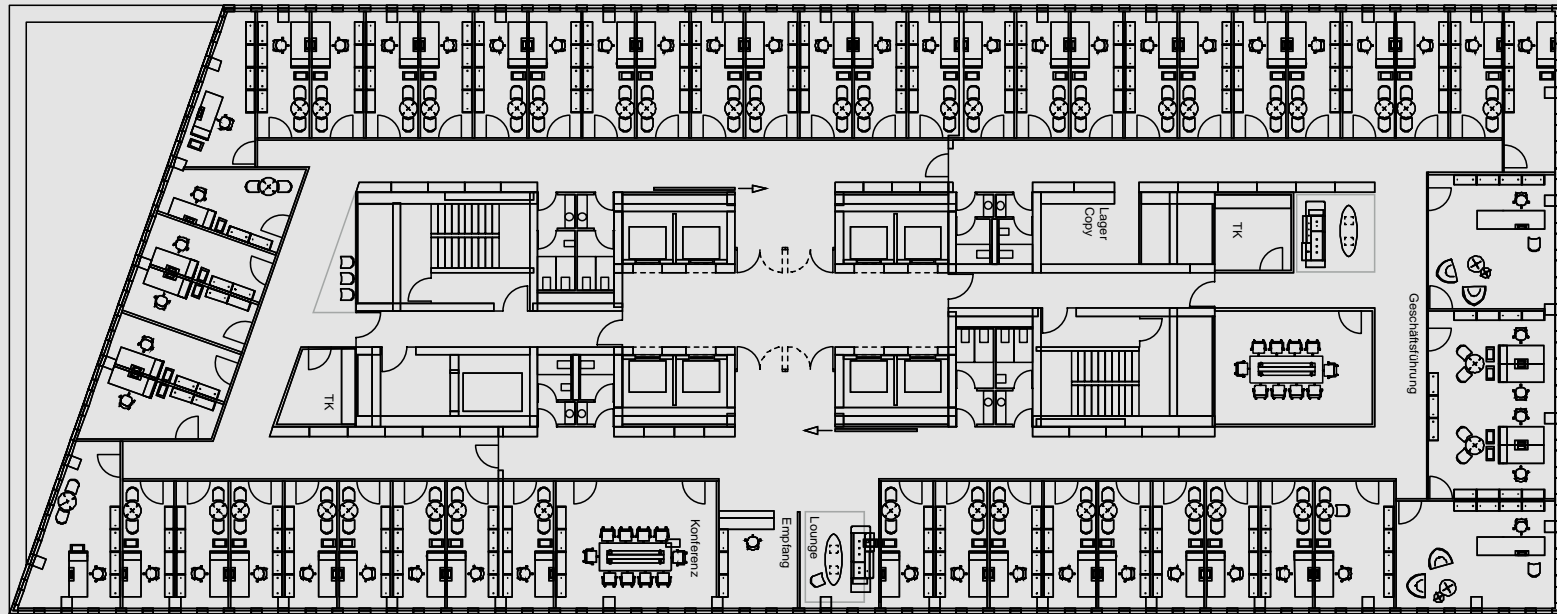
Wellness

⑦ Tridico
 ⑧ Volare
 ⑨ MerridianSpa
 ⑩ Mainhattan Sports

...

ABOUT OUR OFFICES ...

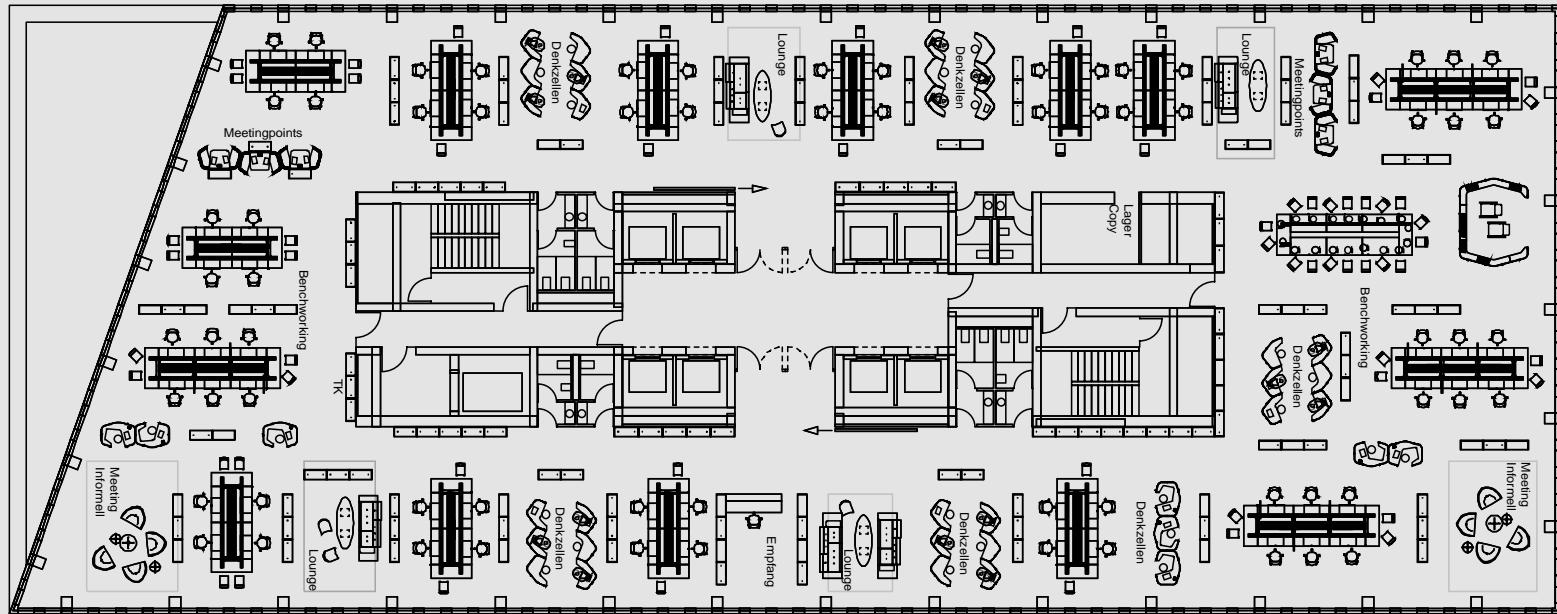
...
IF IT WOULD HAVE
CELLULAR OFFICES



FLOOR PLAN VERSION B



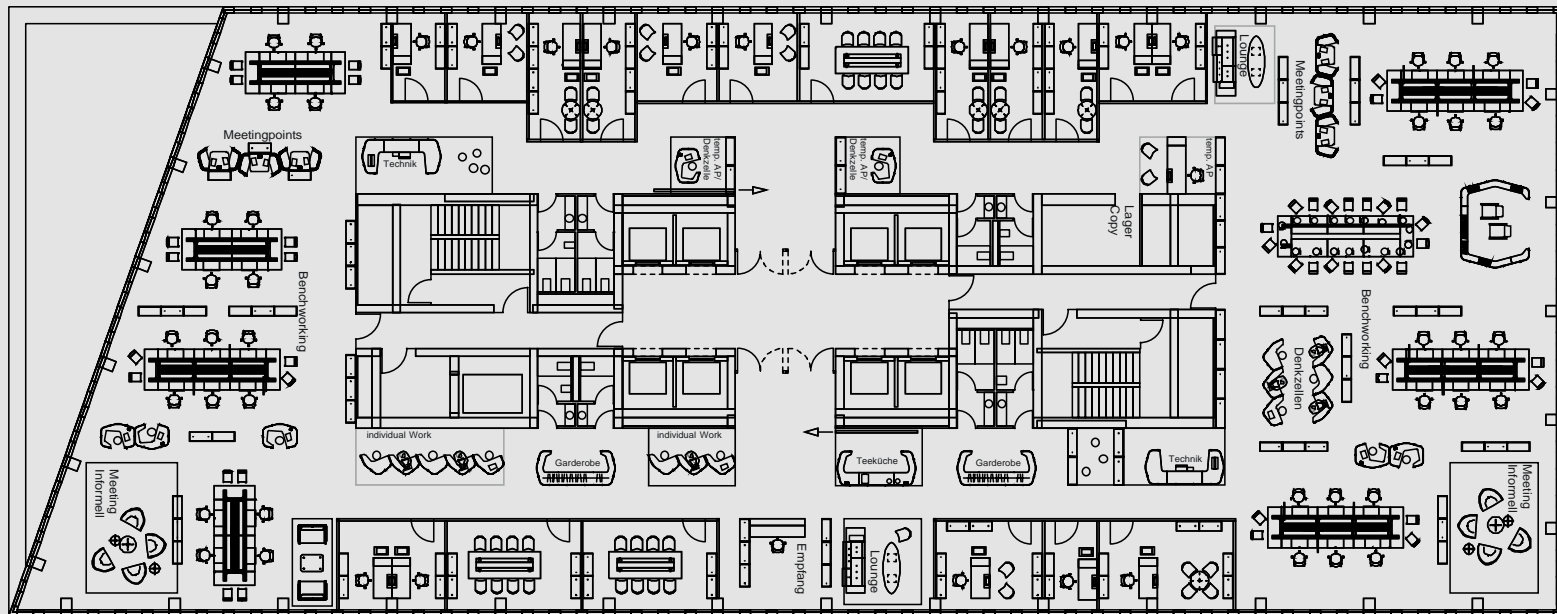
...
IF IT WOULD HAVE
OPEN SPACE



FLOOR PLAN VERSION B



...
IF IT WOULD BE WITH
COMBINED INTERIOR SOLUTIONS



FLOOR PLAN VERSION B



THANK YOU ONE's again.
Let's stay in touch.



CA Immo Deutschland GmbH
Europa-Allee 22
60327 Frankfurt am Main

T.: +49 69 606 27 0
one@caimmo.de
www.caimmo.com
www.one-frankfurt.de